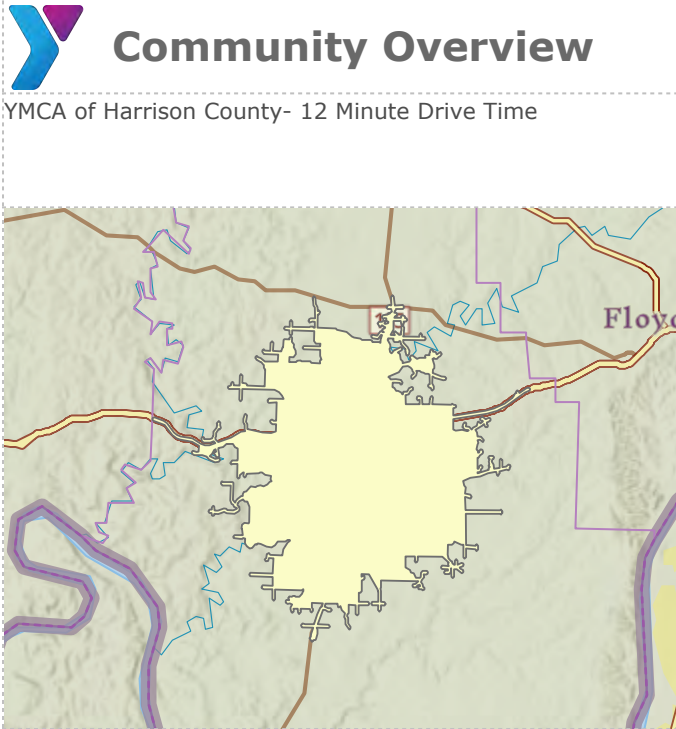


Y-USA Community Profile

YMCA of Harrison County- 12 Minute Drive Time
198 Jenkins Ct. NE

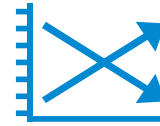
Prepared By Business Analyst for ArcGIS Pro



Key Facts



14,537
Population



0.0%
Population: Annual
Growth Rate
(2022-2027)

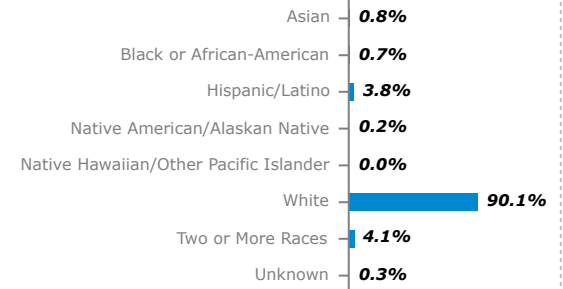


5,741
Households



\$63,420
Median Household
Income

Race & Ethnicity



Ability



1,662
Households With Disability



23.0
Diversity Index
0 (No Diversity)
100 (Complete Diversity)

Population Characteristics



26%

Make Sure I
Exercise Regularly



10%

Actively Seek Info on
Nutrition/Healthy Diet



3.8%

Unemployment Rate

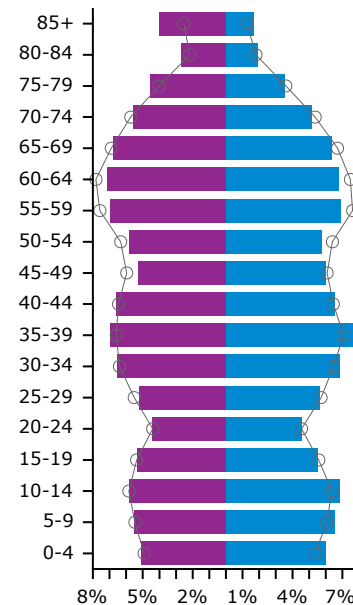


10%

Households Below the
Poverty Level
(ACS 2017-2021)

Age and Gender

Age Pyramid



The largest group:
2023 Males Age 35-39

The smallest group:
2023 Males Age 85+

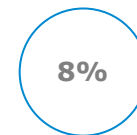
42.2
Median
Age

Female
Male

Dots show
comparison to

Harrison County

Education



No High School
Diploma



44%

High School
Graduate
(Including GED)



27%

Some College
(Includes Associate
Degrees)



22%

Bachelor's/Grad/Prof
Degree

Y-USA Community Profile

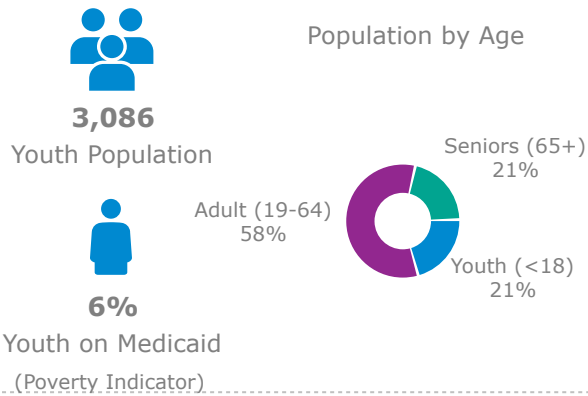
YMCA of Harrison County- 12 Minute Drive Time
198 Jenkins Ct. NE

Prepared By Business Analyst for ArcGIS Pro

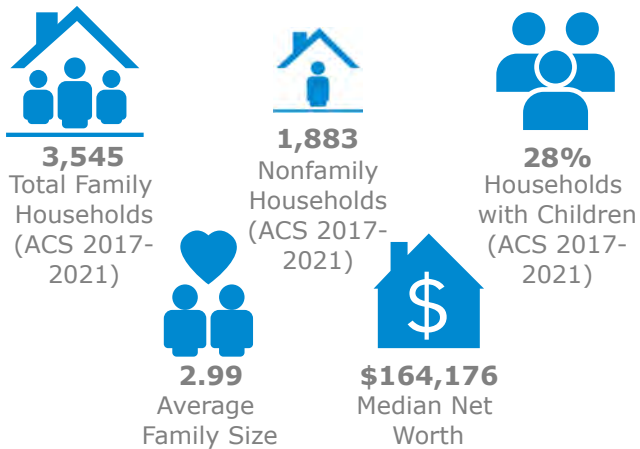
Community Overview

198 Jenkins Ct. NE

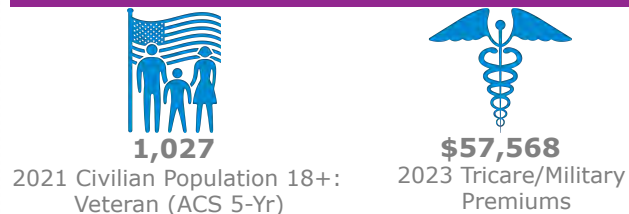
Youth



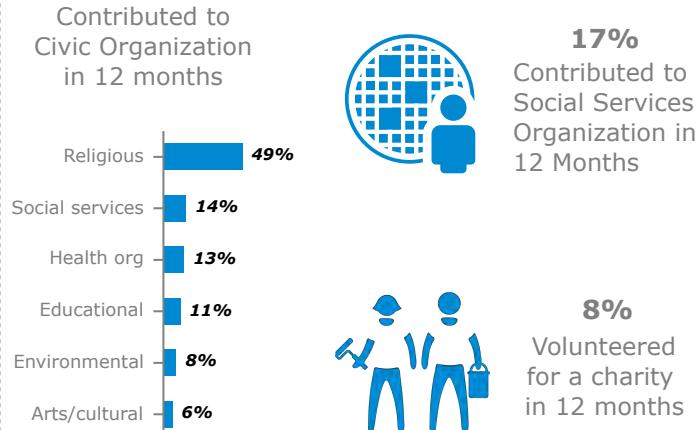
Households



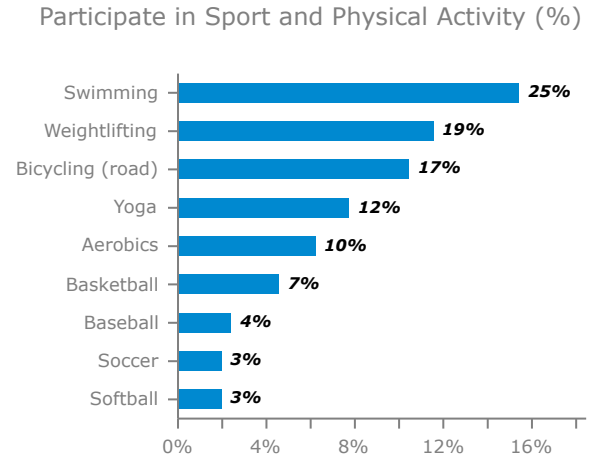
Armed Services



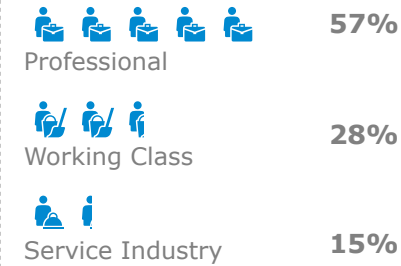
Charitable Engagement



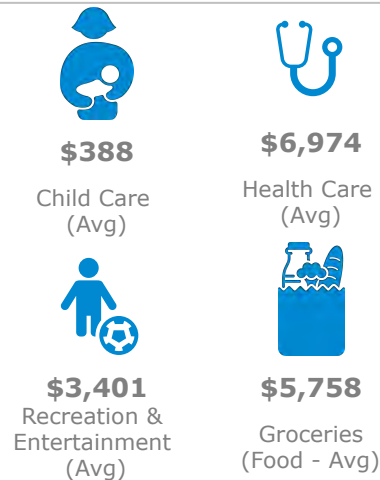
Physical Activity



Employment Type



Spending



Esri Tapestry Segments

	6B Salt of the Earth 2,528 households	44.0% of Households	▼
	6F Heartland Communities 1,900 households	33.1% of Households	▼
	9E Retirement Communities 739 households	12.9% of Households	▼

Note: The Tapestry Segments LifeMode labels are proprietary to Esri, a third party provider of U.S Census and supplemental data, and may not be a sensitive representation of labels/language most appropriate for your community. [Learn More from Esri](#)